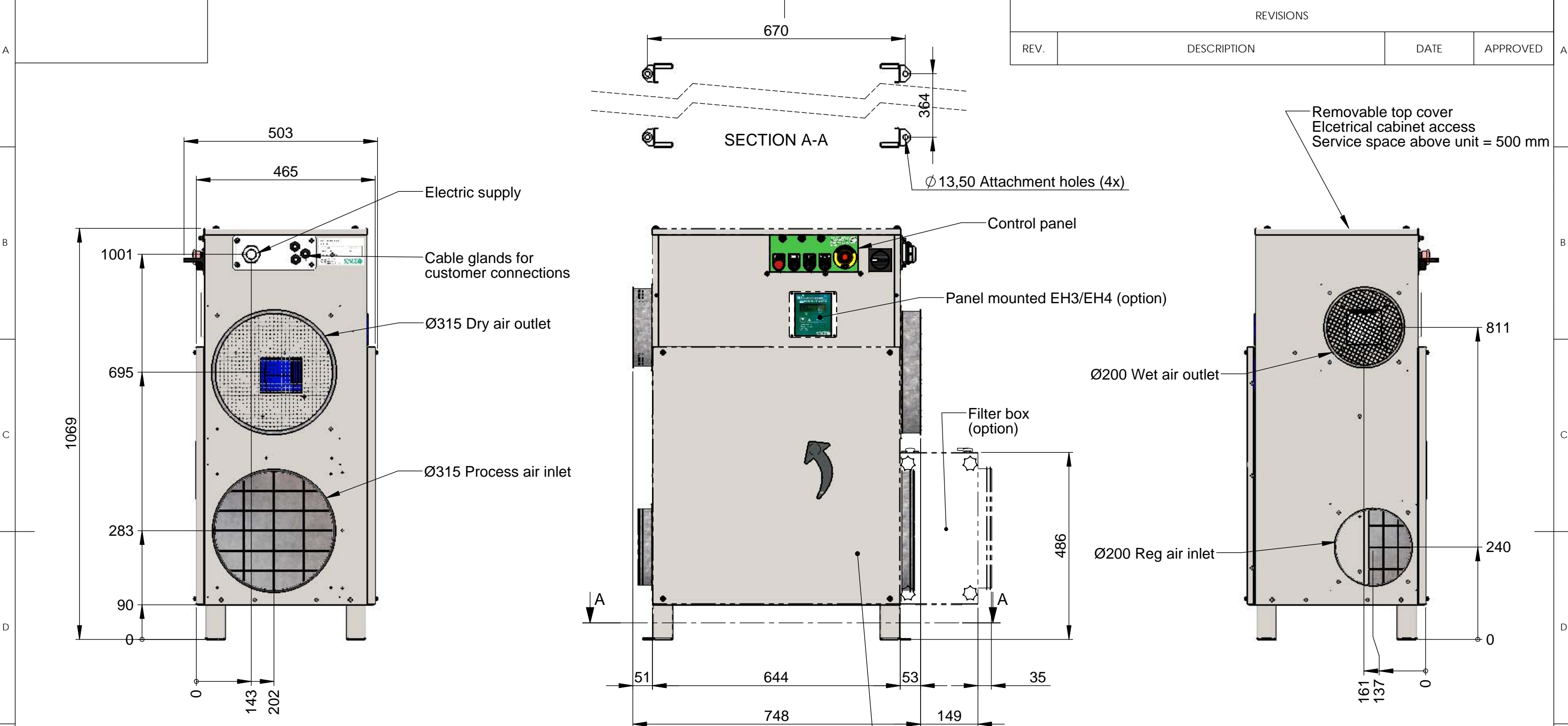


REVISIONS			
REV.	DESCRIPTION	DATE	APPROVED



This document and its contents are the exclusive property of DST Seibu Giken and must not be copied, reproduced, transmitted or communicated to any other party or used for purposes not expressly permitted by us.

Ø315 Process air inlet, option filter box

289

234

Seibu Giken DST AB  
+46 8 445 77 20  
www.dst-sg.com

Designed by	Erik L	Date	2013-10-31
Drawn by	Erik L	Date	2014-03-10
Approved by	-	Date	-
Material	Thickness t=		
Status	Construction	Tolerance	ISO 2768-1m
Scale	1:10	Format	A3
Sheet/Sheet	1/3	Rev Part	00+
Weight (Kg)	66.527		

**Packaging dimensions:**  
WxDxH = 800x600x1200  
Weight ~70 kg

Title/Description		⊕
Dimensionsritning Dimension drawing		
<b>RL-60 R/LR</b>		
Drawing no	Rev	
<b>DST05145</b>	<b>00+</b>	